

*Lockdown April Quiz #2*



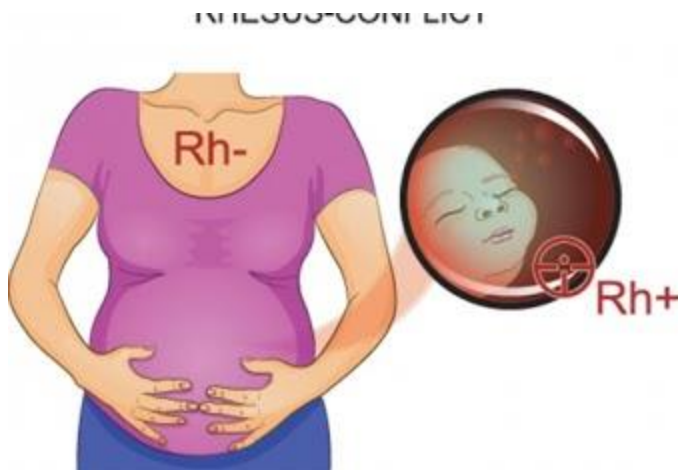
1. WHAT IS THE CAUSE OF DEATH IN RH ALLOIMMUNISATION. \*



- A. severe anaemia in fetus.
- B. High output cardiac failure.
- C. Low output cardiac failure.
- D. A & B
- E. A & C

Ans D

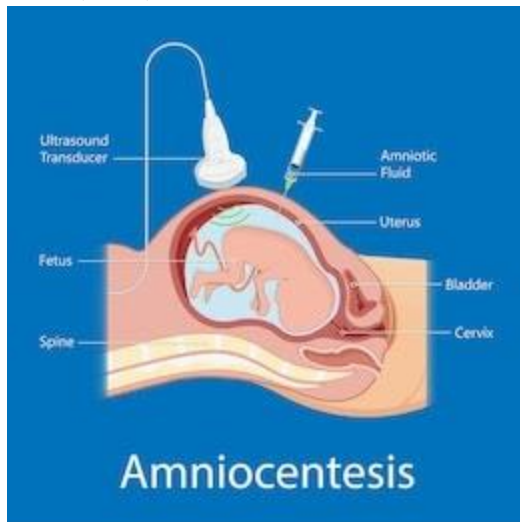
2. CAUSES OF NON SENSITISATION OF RH -VE MOTHERS WHO ARE CARRYING RH+VE FETUS. \*



- A. Insufficient number of fetal cells entering the maternal circulation.
- B. Inborn inability to respond.
- C. immunological non responders.
- D. ABO incompatibility.
- E. A & D
- F. All of the above

Ans F

3. IN AMNIOCENTESIS ,  $\Delta$  OD 450 VALUE LIES IN ZONE 2 OF LILEY"  
CHART.TREATMENT IS \*



shutterstock.com • 1185649261

- A. repeat amniocentesis after one weeks.
- B. repeat amniocentesis after two weeks.
- C. cordocentesis
- D. Intrauterine transfusion

Ans A

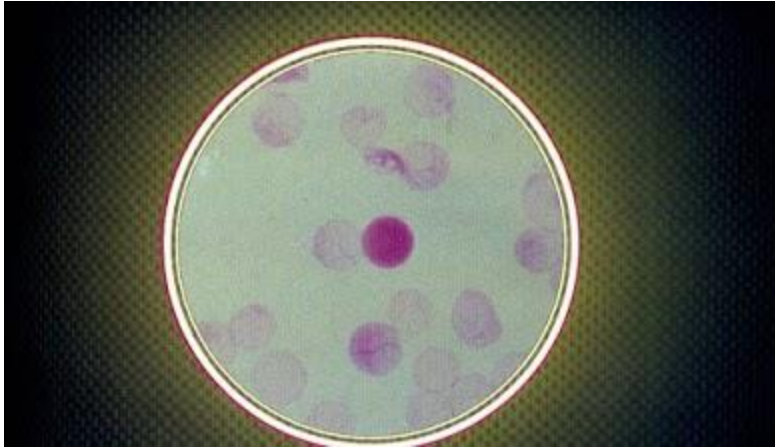
4. THE AFFECTED FETUS SHOWS ALL EXCEPT. \*



- A. congestive heart failure.
- B. Hepatomegaly.
- C. Splenomegaly
- D. peripheral oedema.
- E. placental atrophy.

Ans E

5. THE VOLUME OF FETOMATERNAL TRANSFUSION IS QUANTIFIED BY WHICH TEST. \*



- A. direct coomb"s test.
- B. Indirect coomb" test.
- C. Kleihaur Betke test.
- D. Liley"s chart.
- E. Both C & D

Ans C

6. WHEN SHOULD WE DO THE FIRST FOR RH ANTIBODY SCREENING IN PRIMI GRAVIDA. \*



- A. first test pre natal visit.
- B. At 20 wks
- C. At 24 wks .
- D. At 28 wks.

Ans A

9. AFTER ANTI D IMMUNE GLOBULIN ADMINISTRATION AT 28 WKS, HOW FREQUENTLY ANTI BODY SCREENING SHOULD BE DONE. \*



- A. Every week
- B. After 2 weeks
- C. only once between 28 weeks and delivery.
- D. not required

Ans D

10. 300MICRO GM OF ANTI D IMMUNOGLOBULIN CAN NEUTRALISE HOW MUCH OF FETAL BLOOD. \*



- A. 10 ml
- B. 15ml
- C. 20 ml
- D. 30 ml

Ans D